

POP is a compact, single socket, power module designed specifically for flush installation in a wide range of furniture and interior surfaces where a very small visual footprint is preferred.

Fitting into a 50mm diameter aperture in any suitable hard surface, POP enables designers maximum flexibility in the location of convenient AC power or TUF-R USB charging modules.

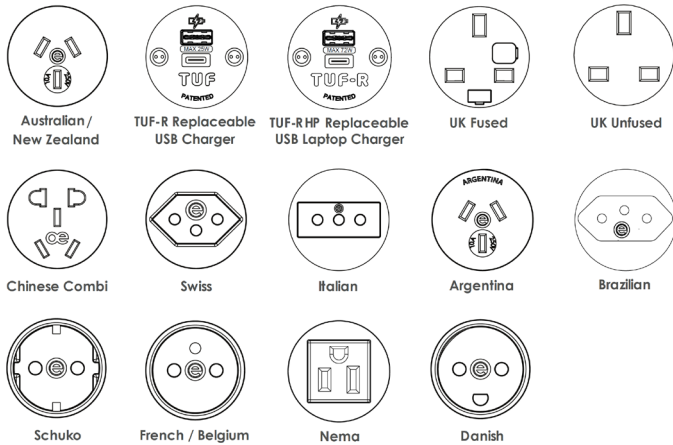
Multiple POP units of the same or different socket configurations can easily be linked with OE GST interconnect cables and supplied from a single power source.

USPs

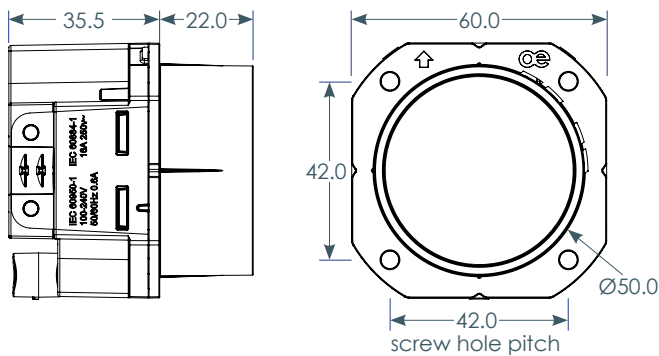
- Flush with surface installation
- Smallest possible visual footprint
- Choice of International sockets
- TUF-R (replaceable) charger option
- Optional integrated GST18 In/Out



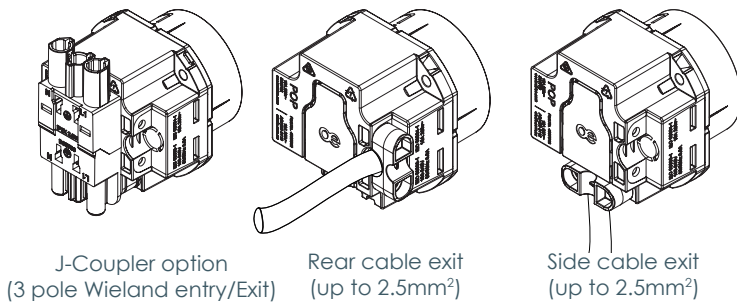
Common Modular Components



Unit Dimensions

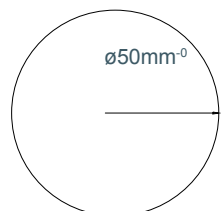


Power inlet options



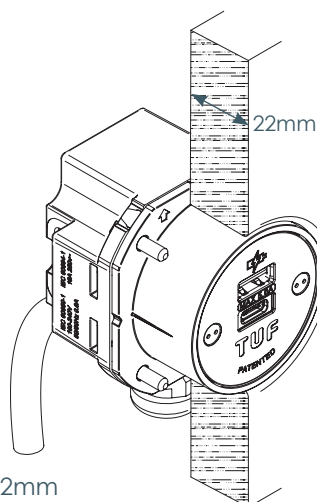
Fitting

Cutout dimensions



Maximum panel thickness:
22mm

If fitted into thinner material,
POP will require spacing
washers whilst thicker
material will need rebating to 22mm



Features

Configuration

Single OE 42mm type AC power socket, or a TUF-R smartphone and tablet charging module or a TUF-R HP smartphone, tablet and laptop charging module. TUF-R HP must be paired with a power supply unit (PSU) and a GST08 cable. Vertical or 45° socket orientation option.

Construction

Body Polycarbonate
Socket Fascia Polycarbonate

Colours

Socket fascia Black, grey or white
Body Black

TUF is available with a Stainless Steel fascia

Quality & Testing

All POP units are manufactured using quality controlled components and practices and are 100% tested before dispatch.

- Visual: Configuration and appearance.
- Power sockets: Continuity, polarity, insulation & earth
- USB charger: Output voltage and resistance

Power cord options

POP may be ordered with:

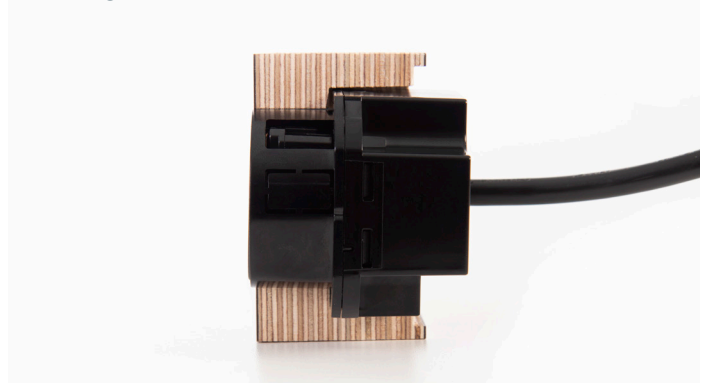
- Hardwired power cord to AC plug
- Hardwired power cord to GST18-3
- Hardwired power cord to OE J coupler
- Fitted with integral OE J coupler

Certifications

POP has been designed and is manufactured to comply with applicable national / international safety and EMC standards for the country of intended use, utilising fully certified components.

Installation

Pop is designed for installation in 50mm diameter apertures in 22mm wood panels Thinner panels may require spacing washers whilst thicker panels will need rebating to 22mm.



TUF-R TECHNICAL



TUF-R and TUF-R HP are quick and simple to replace without the need for an electrician or turning off the power. The unique and patented benefit of being replaceable makes TUF-R perfect for areas of high usage.

CLICK to see how quick and easy TUF-R / TUF-R HP is to replace.

Upgrading or replacing the TUF-R module and not the whole product saves time, money, and significantly reduces waste.

Being replaceable also allows TUF-R to be upgraded in the future to incorporate the latest technologies.



TUF replacing tool.



Insert the 'snake eye' bit into the tool as shown.



Use the tool to unscrew the 'snake eye' screws.



Lift off the TUF fascia



Insert the second part of the TUF replacing tool into the TUF as shown, until a click is heard.



Pull the TUF cartridge out from the unit.



Unwrap and insert the new TUF cartridge, paying close attention to the orientation of the cartridge to the blue housing.



Push the cartridge into the blue housing until a click is heard.



Place the TUF fascia back into position.



Using the TUF replacing tool and 'snake eye' bit, screw the snake eye screws back into place